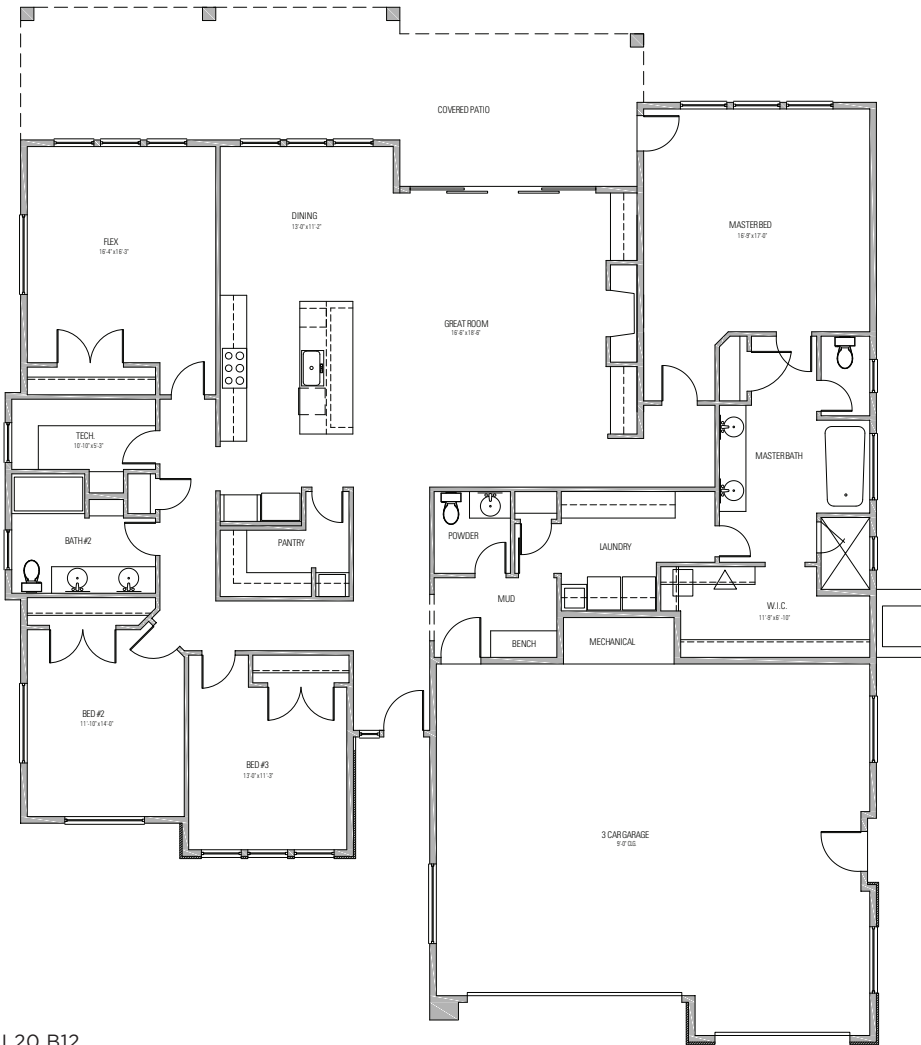
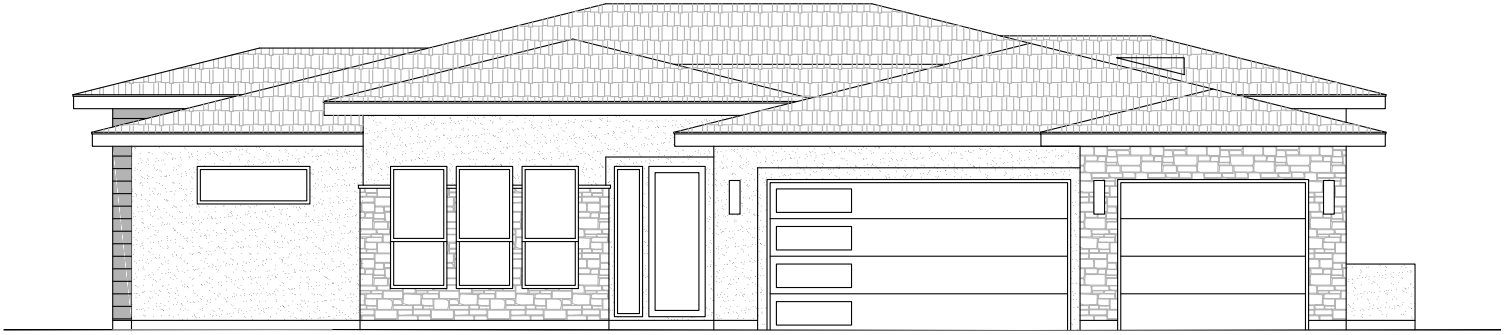




1937 S. METEOR WAY | BOISE, ID

boulder point

boulderpointboisehomes.com



The Capital

- 2820 SQ.FT. | 909 SQ.FT. GARAGE
- 3 BED
- 2.5 BATH
- 3 CAR GARAGE

L20 B12



BILTMORE CO.
Biltmore...Built Better!

All images used are for illustrative and marketing purposes only and are only intended to convey the concept of the home and may be subject to constructed measurements and construction variances. Seller reserves the right to make changes and modifications to plans, materials, specifications, prices, and features without notice or obligation. Floor plans are intended to give a general indication of the proposed layout only. All images and dimensions depicted are not intended to form any contract or warranty.



MIKE BROWN GROUP
REAL ESTATE



HEIDI TIDD
208.860.2908

ERIN VOLK
208.995.0331



boulderpointinfo@mikebrowngroup.com